

# Datblygiadau yn ystod yr ail flwyddyn

## Developments during the second year

Gogledd Cymru Well North Wales

*Glynne Roberts*

*Cyfarwyddwr Rhaglen Programme Director*

- **Gwella iechyd y tlotaf cyflymaf**
- Yng Ngogledd Cymru mae 12% o'r boblogaeth (81,700 o bobl) yn byw yn yr ardaloedd pumed mwyaf difreintiedig yng Nghymru.
- **Mae pobl sy'n byw yn y cymunedau hyn:**
  - Yn mynd yn sâl ynghynt and yn marw yn ifancach.
  - Yn defnyddio mwy o wasanaethau'r sector cyhoeddus gyda chanlyniadau gwaeth.
  - Yn defnyddio mwy o wasanaethau brys iechyd a gofal cymdeithasol.

## Improving the health of the poorest fastest

- In North Wales, 12% of the population (81,700 people) live in the most deprived fifth areas in Wales.
- **People living in these communities:**
  - Get sick earlier and die younger.
  - Use more public sector services with worse outcomes
  - Use more emergency health and social care

# Yn y newyddion.... In the news....



The Daily Mirror sees the research on UK poverty as evidence that the prime minister's vow to tackle inequality was a "sham"

## theguardian

### Sharp rise in child poverty as cuts bite

700,000 young people and pensioners join ranks of Britain's poor in four years

Child poverty has risen sharply in the last four years, with 700,000 more young people and pensioners living in poverty, according to a report published on Monday. The report, from the Joseph Rowntree Foundation, says that the number of children in poverty has risen from 4.5 million in 2012 to 5.2 million in 2016. It also says that the number of pensioners in poverty has risen from 1.5 million in 2012 to 2.2 million in 2016. The report says that the increase in poverty is due to cuts in social security benefits and the impact of the economic downturn. It also says that the government's policies have failed to address the problem of poverty.

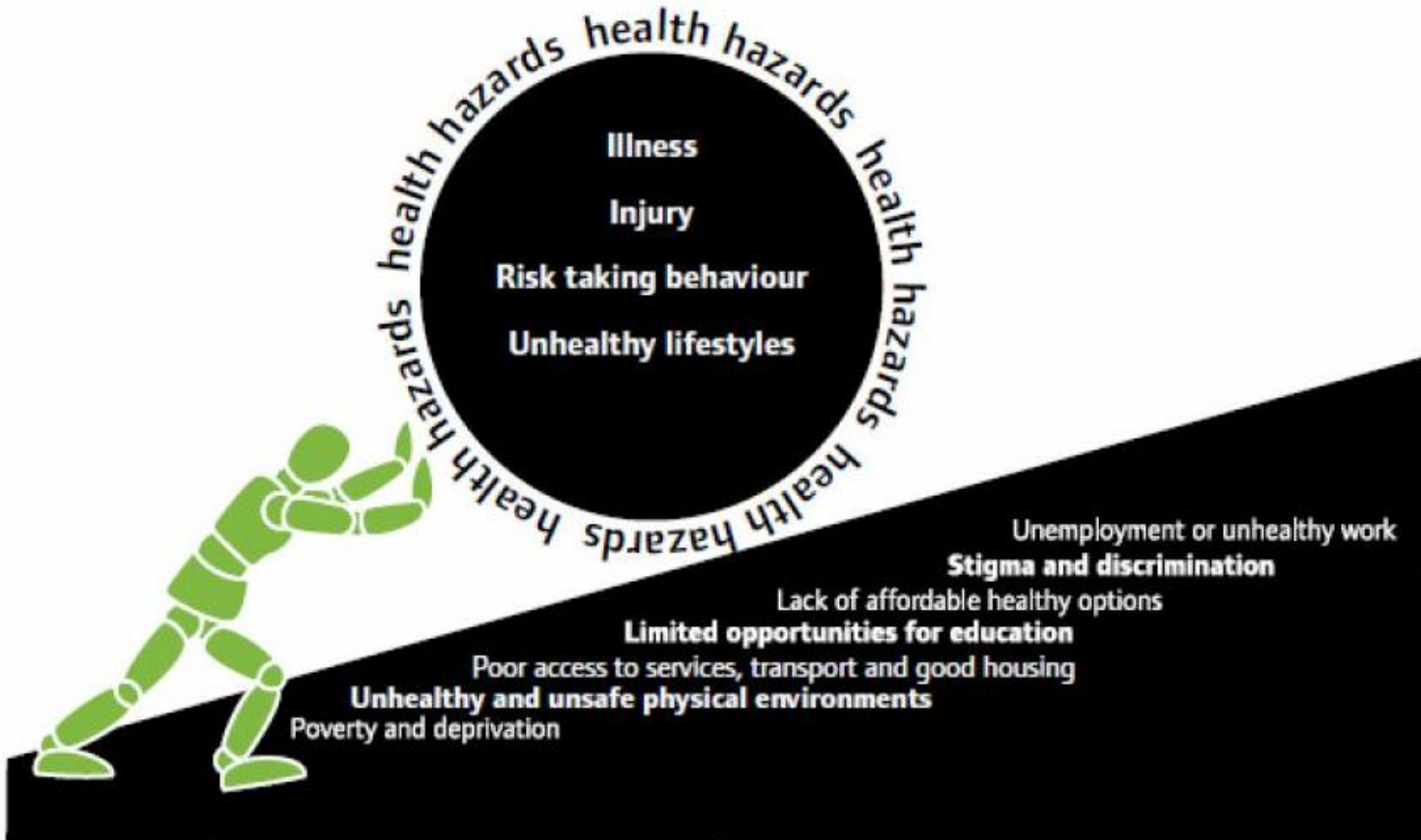


## INDEPENDENT

News > UK > Home News

### Fifth of UK population now in poverty amid worst decline for children and pensioners in decades, major report reveals

Hard-fought progress towards tackling poverty is in peril, the Joseph Rowntree Foundation says as the Government's entire Social Mobility Commission quits



# Cefnogaeth wleidyddol Political Support

**Well-being of Future Generations (Wales) Act 2015**

The Essentials

**Llywodraeth Cymru  
Welsh Government**

[www.gov.wales](http://www.gov.wales)

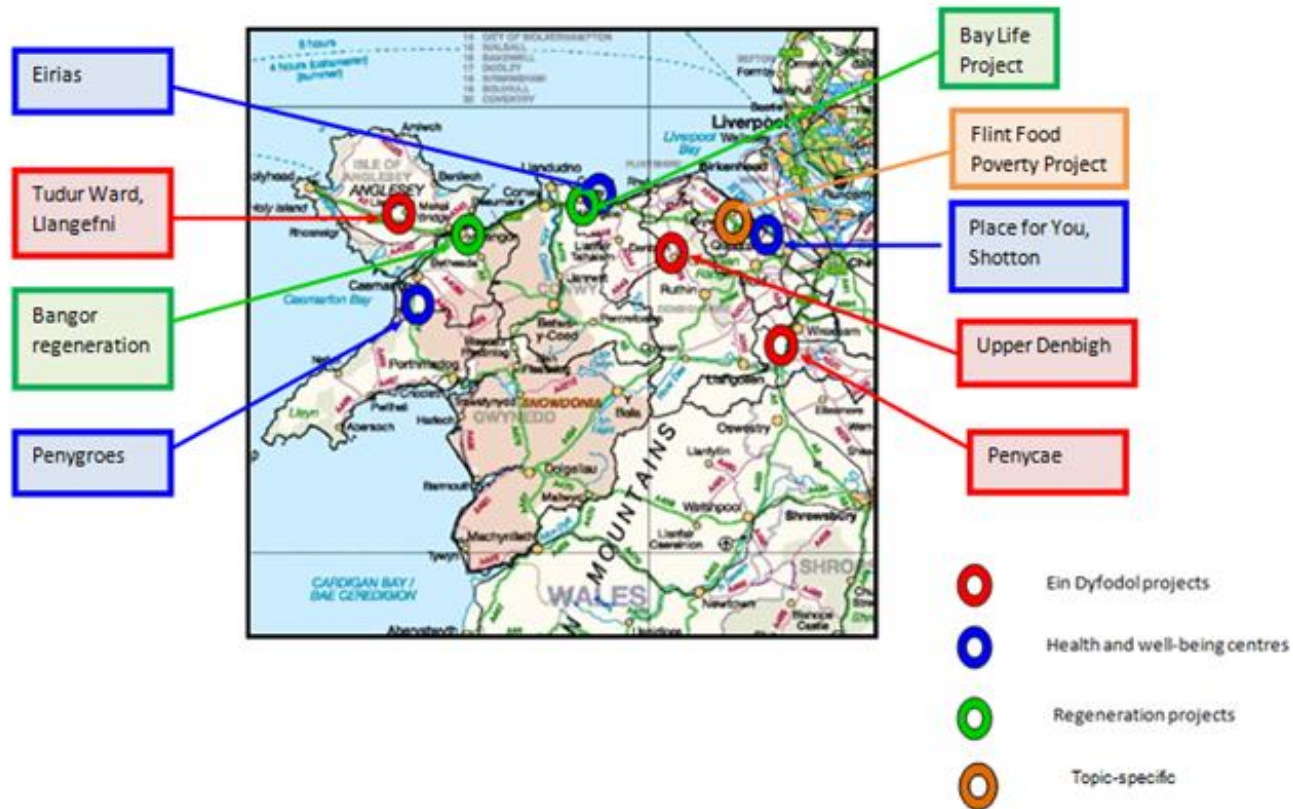
Icons include: Advise, Encourage & Promote; Advisory Panel; Annual Report; Auditor General for Wales; Carry out Reviews; Collaboration; Future Generations Commissioner for Wales; Future Generations Report; Future Trends Report; Integration; Involvement; Long Term; Make Recommendations; National Indicators & Milestones; Prevention; Public Services Boards; Research; Responding to the Future Generations Commissioner; Sustainable Development; Sustainable Development Principle; Transparency; Well-being Duty; Well-being Goals; Well-being Statement.



# Strategaeth y Llywodraeth Welsh Government strategy

- We will tackle inequalities between communities and deliver more services closer to home, acknowledging the importance of communities and the wider environment for good health and well-being.
- There are unacceptable variations in the levels of good health between different groups and communities in Wales, which has an impact in all areas of people's lives. This is sometimes caused by the continuing shadow of post-industrial legacies, but also the stubborn impact of poor economic, social and environmental conditions. Too often, it is hardest to access services in the areas they are needed the most.





## Canolfannau Iechyd a lles

- Shotton
- Bae Colwyn (Eirias)
- Bangor
- Penygroes

## Health and wellbeing centres

- Shotton
- Colwyn Bay (Eirias)
- Bangor
- Penygroes



## Digartrefedd

- Adnabod rol a chyfraniad y Bwrdd Iechyd ym mhob sir
- Prosiect Bangor

## Homelessness

- Identifying the Health Board role and contribution in each county
- Bangor project

## “Ein Dyfodol”

### - Adnabod anghenion

*Penycae:* Sefydlu grwp i ddatblygu cynlluniau

*Dinbych:* Partneriaeth gyda Grwp Cynefin i gynnal gwaith mapio

*Llangefni:* Angen ffurfio grwp

## “Ein Dyfodol”

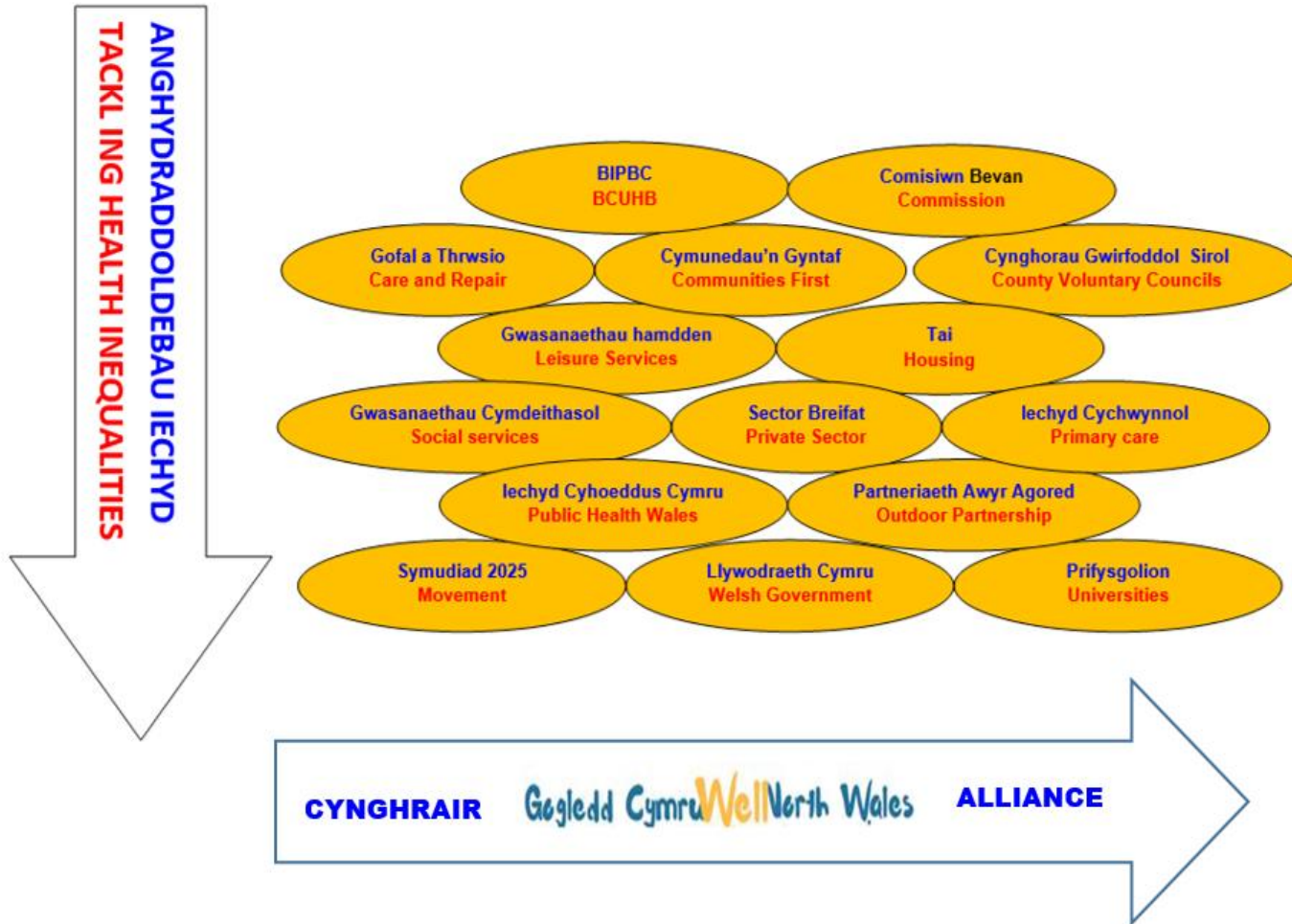
### - Identifying needs

*Penycae:* Group established to identify needs.

*Denbigh:* Partnership established with Grwp Cynefin to undertake mapping exercise.

*Llangefni:* Need to form group

# Gwaith partneriaeth Partnership working



## Presgripsiwn cymdeithasol      Social prescribing

- Cynhadledd bositif
- Gwaith mapio
- Trafodaethau sirol
- Cynllun 2018-19

- Positive conference
- Mapping exercise
- County discussions
- Plan for 2018-19

## Camau nesaf:

- Canolbwyntio ar ddatblygu'r prif brojectau.
- Ehangu'r rhwydwaith
- Ffocws ar ariannu.
- Creu strategaeth digartrefedd.
- Creu rhaglen rhagnodi cymdeithasol.
- Chwilio am gyfleoedd i weithio ar y strategaeth economaidd ehangach

## Next steps:

- Focus on developing the main projects.
- Extend the network
- Focus on funding
- Produce homelessness strategy.
- Create social prescribing programme.
- Seek opportunities to work on the wider economic strategies